



MUSTEE
Preferred by the "Pros"

T6030L TOPAZ™ Fiberglass Bathtubs — Premier Left Hand Drain

SEE PAGES 2-4 FOR VARISTONE™, TOPAZ™ & DURAWALL®
BATHTUB WALLS AND ACCESSORIES ▶



Design features:

- Precision molded using Mustee's premium VARISTONE® fiberglass
- Fits standard 30" x 60" alcove
- Apron supported by twin molded fiberglass brackets for extra stability
- A network of bottom and side structural support
- One-piece molded, with matched metal molds for high strength and integral rigidity
- 40° lumbar slope for relaxed reclining while soaking
- 8-1/2" x 14-1/4" drain offset
- Fits a wide range of finished wall options...
 - TOPAZ™ and DURAWALL® premium fiberglass bathtub walls
 - DURAWALL® deluxe thermoplastic bathtub walls
 - Tile walls
 - Solid surface walls
- Easy to clean, colorfast white semi-gloss finish

Code Accepted

TOPAZ™ Fiberglass Bathtubs meet or exceed performance requirements as listed:

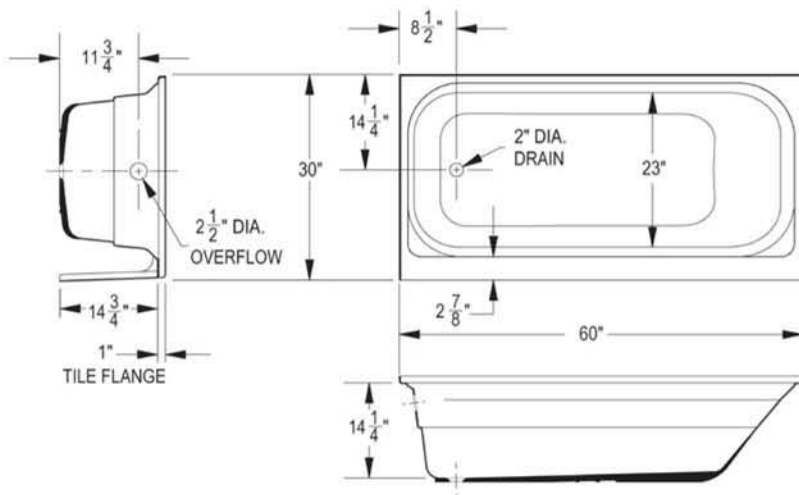
- International Association of Plumbing and Mechanical Officials (IAPMO)® Listed
- American National Standards Institute (ANSI) - Specification ANSI Z 124-2011



Specifications

Model No.	Color	H x W x L	Drain Position	UPC
T6030L	White	15 3/4" x 30" x 60"	LH	6 71031 00411 6
T6030LBN	Bone	15 3/4" x 30" x 60"	LH	6 71031 00414 7
T6030LBT	Biscuit	15 3/4" x 30" x 60"	LH	6 71031 00432 1

Inside depth: 14-1/4"



General: Furnish and install as shown on plans, TOPAZ® bathtub as manufactured by E.L. Mustee & Sons, Inc. Shall be a fiberglass 30" x 60: right hand or left hand Model _____. Construction shall be molded, reinforced fiberglass using matched metal molds under extreme heat and pressure. Shall meet ANSI Specification Z 124-2011. Color: _____ (White, Bone, Biscuit) Weight: 74 lbs. Install in compliance with local codes.

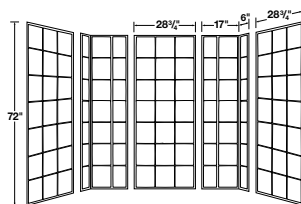


E.L. Mustee & Sons, Inc. • 5431 West 164th Street • Brook Park, OH 44142 • Phone: 216.267.3100 • Fax: 216.267.9997
E-mail: info@mustee.com. • Web: www.mustee.com • Proudly made in the USA

Notice: Our continuous commitment to product improvement may result in changes to product specifications without notice. Patents pending. Made and Printed in U.S.A.



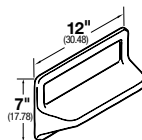
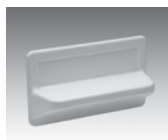
572T VARISTONE™



Up to 60" Wide by 34" Deep

Model	Color
572TWH	White

572.300 VARISTONE™ — SHELVES (OPTIONAL)

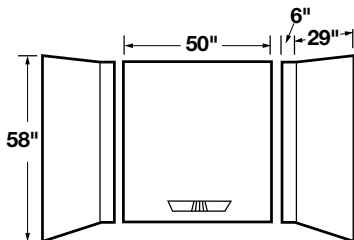


Model	Color
572.300	White
572.300BT	Biscuit

Order desired number of shelves separately. Sturdy, adhesive mounted shelf is easy to install. Carton is 12" x 7 1/4" x 4" and weighs 2.5 lbs.



350 DURAWALL®

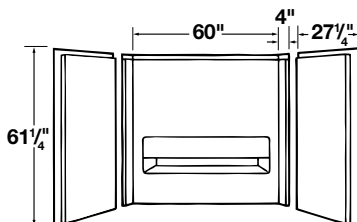


Model	Color
350WHT	White
350BN	Bone
350BT	Biscuit

Fits 30" x 60" Bathtub
Caulking and adhesive provided



660 TOPAZ™ PREMIUM FIBERGLASS BATHTUB WALLS

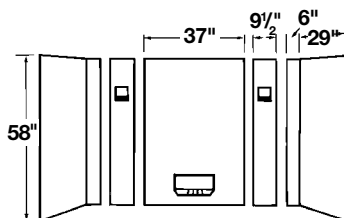


660WHT	White
660BN	Bone
660BT	Biscuit

Fits 30" x 60" Bathtub



500 DURAWALL®



500WHT	White
500BN	Bone

Fits 30" x 60" Bathtub





MUSTEE

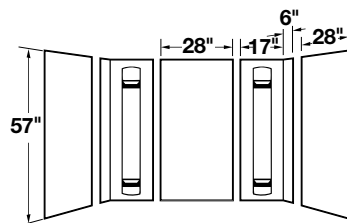
Preferred by the "Pros"

Deluxe Thermoplastic Walls Adhesive Mount

MORE ON PAGE 4 ▶



557 DURAWALL®

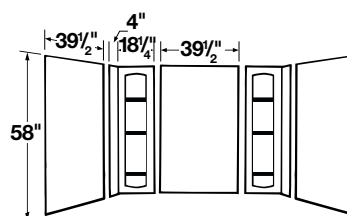


557WHT	White
557BN	Bone

Fits 30" x 60" and 32" x 60" Bathtubs



56 DURAWALL®

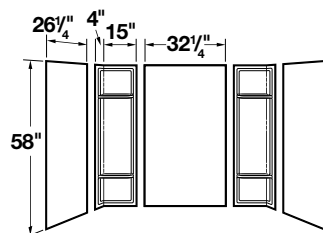


Model	Color
56WHT	White
56BN	Bone

Fit 42" x 72" Bathtub



53 DURAWALL®

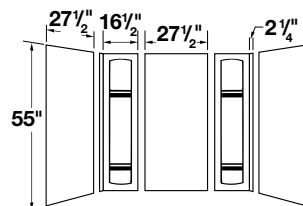


53WHT	White
53BN	Bone

Fit 30" x 60" Bathtub



950 DURAWALL®



950WHT	White
--------	-------

Fit 30" x 60" Bathtub



MUSTEE

E.L. Mustee & Sons, Inc. • 5431 West 164th Street • Brook Park, OH 44142 • Phone: 216.267.3100 • Fax: 216.267.9997
E-mail: info@mustee.com • Web: www.mustee.com • Proudly made in the USA

Notice: Our continuous commitment to product improvement may result in changes to product specifications without notice.
Patents pending. Made and Printed in U.S.A.



▶ **GapSeal-Pro™ — For all shower floors and bathtubs**



Model No.	Description	UPC
60.320A	132" long x 2" tall	6 71031 00496 3

The flexible PVC GapSeal-Pro™ features a strong adhesive strip that allows it to be easily positioned to "extend" the tile flange and effectively seal the gap between drywall or like-surfaces on shower floors or bathtubs. Patent pending.

